



COMPACT 4G LTE
M2M ROUTER



DIGI TRANSPORT WR11 XT

Secure 3G/4G/LTE cellular router for retail, kiosk and industrial control applications

Digi TransPort® WR11 XT delivers a cost-optimized 4G LTE connection to mission critical M2M applications around the world. These cellular routers are ideal for connecting:

- Building and process automation controllers
- Smart grid assets (meters, switches and controllers)
- IP cameras and access controllers
- Remote data loggers, flow meters and sensing equipment
- Telco infrastructure controllers
- ATMs, kiosks and service terminals

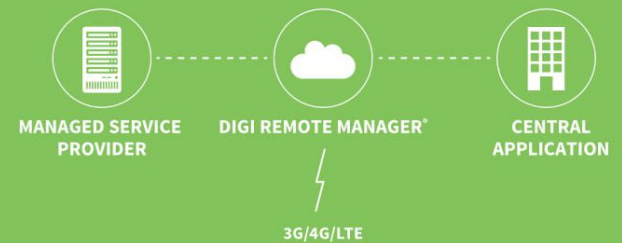
The Digi TransPort WR11 XT provides a secure, reliable connection to industrial controllers, retail terminals and process automation equipment on third party sites or remote locations. This drop-in connectivity gives operators a way to reduce the cost of downtime and service calls and also increase revenue by bringing distributed sites online faster.

Digi management solutions provide easy setup, configuration and maintenance of large installations of remote Digi TransPort devices. Digi Remote Manager® offers web-based device management for remote Digi cellular routers, gateways and third-party devices.

BENEFITS:

- Global HSPA+ and 4G LTE support and certification
- Extremely resilient cellular connection through patented Digi SureLink™, VRRP+ protocol and dual SIM slots
- Enterprise routing features for security, logging and redundancy (e.g., stateful firewall, VPN, SNMP); no annual enterprise software license required
- Digi Remote Manager provides mass configuration, device management and troubleshooting tools
- Rugged aluminum enclosure, flanges and optional DIN rail clip for flexible mounting

APPLICATION EXAMPLE



RELATED PRODUCTS



Digi TransPort® WR21



Digi TransPort® WR31



Digi TransPort® WR44 R



Accessories



Digi Remote Manager®

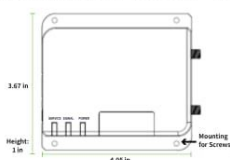
SPECIFICATIONS

Digi TransPort® WR11 XT

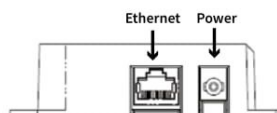
CELLULAR	
LTE - EMEA (M3)	LTE CAT 1: 800(B20)/900(B8)/1800(B3)/2100(B1)/2600 (B7) 2G EDGE: 900/1800 MHz Transfer rate (max): 10 Mbps down, 5 Mbps up
LTE - EMEA/APAC (L7)	LTE CAT 3: 800(B20)/1800(B3)/2600(B7) 3G HSPA+: 900/2100 MHz 2G Edge/GPRS: 850/900/1800/1900 MHz Transfer rate (max): 100 Mbps down, 50 Mbps up Approvals: Vodafone
LTE - UNITED STATES (M4)	LTE CAT 1: 700(B12)/850(B5,B26)/AWS(B4)/1900(B2,B25) Transfer rate (max): 10 Mbps down, 5 Mbps up Approvals: Sprint (pending)
LTE - NORTH AMERICA (M6)	LTE CAT 1: 700(B12,B13)/850(B5)/AWS(B4)/1900(B2) HSPA+: 850/1900 MHz Transfer rate (max): 10 Mbps down, 5 Mbps up Approvals: PTCRB, AT&T, Verizon, Telus (pending)
LTE - ANZ/LATAM (M9)	LTE CAT 1: 700(B28)/850(B5)/900(B8)/1800(B3)/2100(B1) 3G HSPA+: 850/900/2100 MHz Transfer rate (max): 10 Mbps down, 5 Mbps up
GLOBAL HSPA+ - (U9)	3G HSPA+: 850/900/1700AWS/1900/2100 MHz 2G EDGE/GPRS: 850/900/1800/1900 MHz Transfer rate (max): 21 Mbps down, 5.76 Mbps up Approvals: PTCRB, Vodafone
CONNECTORS	(2) 50 Ω SMA (center pin: female); (1) connector for non-LTE models
SIM SLOTS	(2) Mini-SIM (2FF)
SIM SECURITY	Screw-down SIM cover
SOFTWARE & MANAGEMENT	
REMOTE MANAGEMENT	Digi Remote Manager® (cloud based); SNMP v1/v2c/v3 (user installed/managed)
LOCAL MANAGEMENT	WebUI (HTTP/HTTPS); CLI (Telnet, SSH, SMS)
MANAGEMENT/TROUBLESHOOTING TOOLS	FTP, SFTP, SCP; Protocol analyzer with PCAP for Wireshark; Event logging with Syslog and SMTP; NTP/SNTP
MEMORY	20 MB RAM, 10 MB file space
ETHERNET	
PORTS	(1) RJ-45; 10/100 Mbps (auto-sensing)
PHYSICAL	
DIMENSIONS (L X W X H)	3 in x 4 in x 1 in (7.62 cm x 10.16 cm x 2.54 cm)
WEIGHT	0.5 lb (.22 kg)
STATUS LEDS	Power on, WWAN signal strength, WWAN service
ENCLOSURE	Industrial (Metal) / IP30
POWER REQUIREMENTS	
POWER INPUT	5 VDC, 15W minimum power source required
POWER SUPPLY	Must be used with a Digi approved power supply
POWER CONSUMPTION	3.5W typical (Idle); 10W typical (Peak Tx/Rx)
ENVIRONMENTAL	
OPERATING TEMPERATURE	-30° C to +70° C (-22° F to +158° F) reduced cellular performance may occur above +60° C
RELATIVE HUMIDITY	5% to 95% (non-condensing)
APPROVALS	
CELLULAR	PTCRB
SAFETY	UL 60950, CSA 22.2 No. 60950, EN60950
EMISSIONS/IMMUNITY	CE, FCC Part 15 Class B, AS/NZS CISPR 22, EN55024, EN55022 Class B
WARRANTY	
PRODUCT WARRANTY	3 years + Digi Foundations*

*Digi Foundations can extend the standard three-year warranty to a Limited Lifetime Warranty that provides replacement with a new or similar Digi product for a period of five years from the date of purchase. After five years from the purchase date, the warranty value will revert to a 40 percent credit towards the MSRP of an equivalent product from Digi.

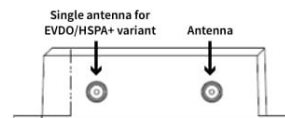
DIGI TRANSPORT® WR11 XT - TOP



LEFT SIDE

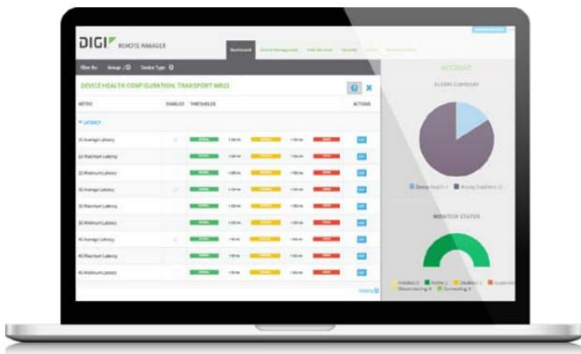


RIGHT SIDE



ENTERPRISE SOFTWARE	DESCRIPTION
PROTOCOL SUPPORT	HTTP, HTTPS, FTP, SFTP, SSL, SMTP, SNMP (v1/v2c/v3), SSH, Telnet and CLI for web management; Remote management via Digi Remote Manager; SMS management, protocol analyzer, ability to capture PCAP for use with Wireshark; DynDNS; Dynamic DNS client compatible with BIND9/No-IP/DynDNS
SECURITY/VPN	IP filtering, stateful inspection firewall with scripting, address and port translation; VPN: IPSec with IKEv1, IKEv2, NAT Traversal; SSL, SSLv2, SSLv3, FIPS 197, open VPN client and server; PPTP, L2TP;(5) VPN tunnels (not upgradable); Cryptology: SHA-1, MD5, RSA; Encryption: DES, 3DES and AES up to 256-bit (CBC mode for IPsec); Authentication: RADIUS, TACACS+, SCEP for X.509; certificates; Content filtering (via 3rd party); MAC address filtering; VLAN support
ROUTING/FAILOVER	IP pass-through; NAT, NATP with IP port forwarding; Ethernet bridging; GRE; Multicast routing; Routing protocols: PPP, PPPoE, RIP (v1, v2) OSPF, SRI, BGP, IGMP routing (multicast); RSTP (Rapid Spanning Tree Protocol); IP failover: VRRP, VRRP+TM; Automatic failover/ failback to second GSM network/standby APN
OTHER PROTOCOLS	DHCP; Dynamic DNS client compatible with BIND9/No-IP/DynDNS; QoS via TOS/DSCP/WRED

DIGI REMOTE MANAGER®



CAPABILITIES

- Centralized management of remote devices over 3G/4G/LTE
- Define standard configurations and automatically monitor individual devices for PCI security compliance
- Report and alert on performance statistics, including connection history, signal quality, latency, data usage and packet loss
- No servers or applications to operate and maintain
- Complete tasks for your entire device network in minutes
- Edit configurations and update firmware for your individual devices or groups
- Monitor the status and location of your remote device via a web browser
- Active or deactivate cellular lines and monitor data to ensure you never incur overage charges

INFRASTRUCTURE

- Hosted in a commercial-grade SAS 70-certified environment
- Superior availability, operating to 99.9% or greater
- Open APIs available to support application development

SECURITY

- Certified SSAE-16 facilities
- Over 175 Security Controls in place to protect your data
- Enables compliance with security frameworks like PCI, HIPAA, NIST and more
- Earned SkyHigh's Cloud Trust Program highest ranking of Enterprise-Ready

PART NUMBERS	DIGI TRANSPORT WR11 XT
WR11-M300-DE1-XB	Digi TransPort WR11 XT - 4G LTE EMEA/APAC, Single Ethernet
WR11-M400-DE1-XB	Digi TransPort WR11 XT - 4G LTE Sprint, Single Ethernet
WR11-M600-DE1-XB	Digi TransPort WR11 XT - 4G LTE North America, Single Ethernet
WR11-M900-DE1-XB	Digi TransPort WR11 XT - 4G LTE APAC/LATAM, Single Ethernet
WR11-L700-DE1-XB	Digi TransPort WR11 XT - 4G LTE EMEA/APAC, Single Ethernet with 2G/3G fallback
WR11-U900-DE1-XB	Digi TransPort WR11 XT - HSPA+ Global, Single Ethernet

PART NUMBERS	DIGI FOUNDATIONS ADD-ONS
DGF-BDL-PREM-1YR	Digi Foundations add-on bundle 1 year
DGF-BDL-PREM-3YR	Digi Foundations add-on bundle 3 years
DGF-BDL-PREM-5YR	Digi Foundations add-on bundle 5 years

PART NUMBERS	ACCESSORIES*
76000926	Antenna - Cellular, 3G/4G/LTE
76000954	Antenna Base - SMA, 1m, RG174
76002074	Accessory Kit - AC Power, Std Temperature, EU Plug
76002065	Accessory Kit - DC Power
76002062	Accessory Kit - AC Power, Std Temperature, US Plug
76002063	Accessory Kit - AC Power, Std Temperature, Intl Plugs
76002064	Accessory Kit - AC Power, Extd Temperature, Intl Plugs
76000935	AC Power Supply - EU Plug to 5VDC - 2.5mm locking barrel plug
76000965	AC Power Supply - Extd Temperature, Universal plugs (US, EU, UK, AU) to 5VDC - 2.5mm locking barrel plug
76000934	AC Power Supply - US Plug to 5VDC - 2.5mm locking barrel plug
76000976	DC Power Supply - Converts 9-30VDC to 5VDC - 2.5mm locking barrel plug
76002021	AC Power Supply - Std Temperature, Universal plugs (US, EU, UK, AU) to 5VDC - 2.5mm locking barrel plug
76000826	Cable - Ethernet, RJ45 to RJ45, 2m

*Sold separately, unless otherwise noted.

FOR MORE INFORMATION
PLEASE VISIT
WWW.EPROTECA.COM

DIGI SERVICE AND SUPPORT / You can purchase with confidence knowing that Digi is always available to serve you with expert technical support and our industry leading warranty. For detailed information visit www.digi.com/support.

© 1996-2019 Digi International Inc. All rights reserved.
All trademarks are the property of their respective owners.

91004202
A10/319



Tel.: +506 2280-1686 • Fax: +506 2524-2397
ventas@eroteca.com • www.eroteca.com

