



Digi IX10

Rugged, reliable, cost-effective connectivity for critical industrial applications

Digi IX10 is a full-featured industrial cellular router built for trouble-free reliability over a long service life — easy to deploy and centrally managed via **Digi Remote Manager**® (Digi RM)

Its flexible power and connectivity options make it a versatile and cost-effective choice for industrial, digital signage, ATMs, lottery terminals, kiosks and other unattended retail applications that need to provide secure transactions over public and private cellular networks.

Digi IX10 can operate on public and private LTE networks, with features to assist in network control and management, such as dual SIMs for cellular failover connectivity, VLAN support, load balancing between cellular and Ethernet WANs, dual APNs and configurable APN search.

Digi IX10 features one Ethernet port and one RJ-50 serial port supporting both RS-232 and RS-485. In the event of an interruption to your primary network connection, Digi RM also provides secure out-of-band management of edge devices via Digi IX10's serial port and command-line interface.

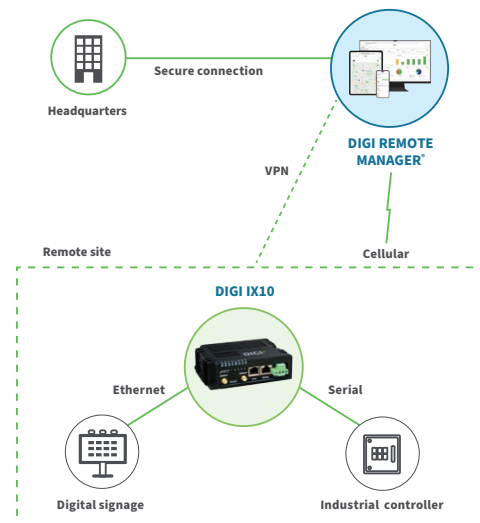
Gain critical insights into your deployed devices and manage your network with Digi RM — the command center for your deployment. Digi RM is a cloud-based solution that facilitates easy setup, mass configuration, maintenance and support, even for thousands of devices. Digi RM empowers you to evaluate, update and configure your Digi products, while providing easy visibility into the health of your network. It also offers low-touch and no-touch provisioning.

Digi IX10 offers the convenience of a global SKU for simplified global distribution and deployment, as well as cost-optimized SKUs for North America, including a CBRS-only SKU.

Key features, benefits and applications

- Compact and economical connectivity solution with industrial feature set for public and private cellular networks
 - Redundant connectivity with dual SIMs and **Digi SureLink**®
 - Global and regional bands with single part number to simplify distribution, deployment and management
 - Meets U.S. government **FIPS 140-2** cybersecurity standard
 - Built-in **Digi TrustFence**® for device security, device identity and data privacy
 - **Digi Containers** to enable powerful, cost-efficient applications
-
- Ethernet port and single RJ-50 serial port (RS-232/485)
 - C1D2 rated with IP30 enclosure

Application example



Related Digi industrial IoT software and solutions



DIGI IX10

Specifications

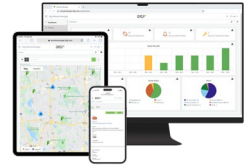


Manage and configure Digi IX10
with Digi Remote Manager

SPECIFICATIONS		DIGI IX10
CELLULAR		
CERTIFICATIONS**	Visit digi.com/resources/certifications for latest certifications	
LTE CAT 4 GLOBAL (G4)	LTE Cat 4 Global: B1, B2, B3, B4, B5, B7, B8, B12, B13, B18, B19, B20, B25, B26, B28, B38, B39, B40, B41; 3G: B1, B2, B4, B5, B6, B8, B19; 2G EDGE / GPRS: 850 / 900 / 1800 / 1900 MHz	
LTE CAT 4 REGIONAL — NORTH AMERICA (N4)	LTE Cat 4 Regional — North America: B2, B4, B5, B12, B13, B14, B66, B71; 3G: B2, B4, B5	
LTE-ADVANCED CAT 6 CBRS-ONLY — NORTH AMERICA (C6)	LTE-Advanced Cat 6 CBRS-only — North America: B42, B43, B48 (CBRS)	
SIM SLOTS	(2) Mini-SIM (2FF)	
SIM SECURITY	Behind SIM cover, secured with screw (#1 Phillips)	
SOFTWARE AND MANAGEMENT*		
REMOTE MANAGEMENT	Digi Remote Manager ; SNMP v2/v3 (user installed/managed)	
LOCAL MANAGEMENT	WebUI (HTTP/HTTPS); CLI (SSH)	
MANAGEMENT/ TROUBLESHOOTING TOOLS	FTP client, SCP; protocol analyzer with PCAP for Wireshark; event logging with syslog and SMTP client; NTP/SNTP; Nagios, Intelliflow, iPerf, Dynamic DNS, ping, traceroute	
MEMORY	256 MB RAM, 256 MB flash	
ETHERNET		
PORTS	(1) RJ-45; 10/100 Mbps (auto-sensing)	
SERIAL		
PORTS	(1) RJ-50 10-pin (10P10C); RS-232/485; software selectable - RS-232 DTE (RXD, TXD, RTS, CTS, DTR, DCD, DSR, RI) - RS-485 (TX/RX+; RX/TX-); half-duplex	
PHYSICAL		
DIMENSIONS (L x W x H)	118 mm x 88 mm x 35 mm (4.65 in x 3.46 in x 1.38 in)	
WEIGHT	0.39 kg (0.86 lb)	
STATUS LEDs	Power, Internet, SIM 1, SIM 2, SIM fail, LTE, signal strength (5)	
ENCLOSURE	Glass-filled polyphenylene sulphide (PPS) / IP30	
POWER REQUIREMENTS		
POWER INPUT	9 - 30 VDC, reverse polarity protection, 1.0 A maximum	
POWER CONSUMPTION	Configurable low-power modes; 1.5 W (light traffic flow), 2.5 W (peak data transmission); 1.25 W (low power mode, idle traffic)	
ACCESSORIES		
AVAILABLE ACCESSORIES	Accessories not included. Available accessories: industrial extended temperature or commercial power supply (required), and cellular antennas, DIN rail clip and EIA 422/485 to RJ-45 connector (recommended / optional)	
ENVIRONMENTAL		
OPERATING TEMPERATURE	-40 °C to 70 °C (-40 °F to 158 °F); device performance may be impacted above 50 °C (122 °F)	
STORAGE TEMPERATURE	-40 °C to 85 °C (-40 °F to 185 °F)	
RELATIVE HUMIDITY	5% to 95% (non-condensing)	

DIGI IX10

Specifications and Technologies



Manage and configure Digi IX10 with Digi Remote Manager

SPECIFICATIONS	DIGI IX10
APPROVALS**	
CELLULAR	Visit digi.com/resources/certifications for latest cellular certifications and updates
SAFETY	IEC 62368-1, CB, EN 62311, UL 121201 9th Editio, CAN/CSA C22.2 NO.213-17
ENVIRONMENTAL	ROHS3
EMISSIONS / IMMUNITY	CE; RED; FCC Part 15, Subpart B; ICES-003; AU/NZS CISPR32
WARRANTY***	
PRODUCT WARRANTY	1-year

ENTERPRISE SOFTWARE	DESCRIPTION
PROTOCOL SUPPORT	HTTPS, FTP client, TLS v1.2, SCP (client and server), SFTP, SMTP client for use by scripts and the command line, SNMP (v2/v3), SSH; remote management via Digi Remote Manager ; protocol analyzer, ability to capture PCAP for use with Wireshark; DynDNS; dynamic DNS client compatible with BIND9/No-IP/DynDNS; captive portal, Intelliflow; Nagios, DNS server, NTP server, multicast, mDNS, IPerf
SECURITY	IP filtering, stateful firewall, custom firewall rules (iptables), address and port translation; TLS 1.2 and above, OpenVPN client and server; VPN tunnels; Authentication: RADIUS, TACACS+; certificates; MAC address filtering; VLAN support
VPN	IPSec with IKEv1, IKEv2, NAT Traversal; OpenVPN client and server; GRE VPN tunnels; Cryptology: SHA-1/256/384/512, MD5, RSA; Encryption: 3DES and AES up to 256-bit (CBC mode for IPsec); Diffie Hellman: DH groups 1-32 (CURVE448)
ROUTING / FAILOVER	IP pass-through; NAT, NAPT with IP port forwarding; GRE; multicast routing; Routing protocols: RIP (v1, v2) OSPF, BGP; IP failover: VRRP; automatic failover, Digi SureLink
OTHER PROTOCOLS	DHCP; dynamic DNS client compatible with No-IP/DynDNS

*For a comprehensive list of operating system features, please visit digi.com/solutions/by-technology/dal-operating-system/features.

Featured Technologies



Product photos

Digi IX10 – front



Digi IX10 – back



DIGI IX10

Part Numbers

PART NUMBERS		DIGI IX10
DIGI IX10 MODELS		
IX10-00G4		Digi IX10 — LTE Cat 4 Global, Ethernet, RS-232/485
IX10-00N4		Digi IX10 — LTE Cat 4 Regional (North America), Ethernet, RS-232/485
IX10-00C6		Digi IX10 — LTE-Advanced Cat 6 CBRS-only (North America), Ethernet, RS-232/485

PART NUMBERS		AVAILABLE ACCESSORIES**
REQUIRED ACCESSORIES (INDUSTRIAL OR COMMERCIAL POWER SUPPLY)		
76002104		Industrial extended temperature power supply with plug tips for US, UK, EU, AU; -20 °C to 70 °C (-4 °F to 158 °F)
76002117		Commercial temperature power supply with plug tips for US, UK, EU, AU; 0 °C to 40 °C (32 °F to 104 °F)
RECOMMENDED AND OPTIONAL ACCESSORIES		
76002103		(1) Cellular antenna, order quantity 2
76002095		DIN rail clip kit
76000723		Connect EIA 422/485 devices to Digi products that have 10-pin RJ-45 connectors**

**Sold separately, unless otherwise noted.

PART NUMBERS		VALUE-ADDED SERVICES
DIGI-RM-PRM-CS		Digi Containers subscription — 1-year subscription

