



Digi EX15

Branch connectivity in a compact, affordable, all-in-one solution

Digi EX15 cellular extenders with advanced routing capabilities offer gigabit Ethernet and Wi-Fi connectivity for retailers and other organizations that cannot tolerate network downtime and the negative impact on revenue streams and brand reputation — easy to deploy and centrally managed via **Digi Remote Manager®** (Digi RM)

A suite of upgradeable **Digi CORE® plug-in LTE modems** lets users select the cellular speeds that best fit their business requirements, including LTE Cat 4 and LTE-Advanced Cat 7.

Combine Digi EX15 with a dedicated wireline connection to ensure dual ISP connectivity, maximum uptime and complete business continuity for devices that must be “always on,” such as mobile kiosks, digital signs and POS systems.

You can use Digi EX15 for primary LTE connectivity, in addition to dual-connectivity/failover. Additionally, the serial port can provide out-of-band (OOB) management for remote, off-premise equipment.

Part of Digi enterprise solutions, Digi EX15 comes with industry-leading software, including **Digi Accelerated Linux (DAL OS)**, **Digi TrustFence®** security framework, and the **Digi RM** configuration and management platform.

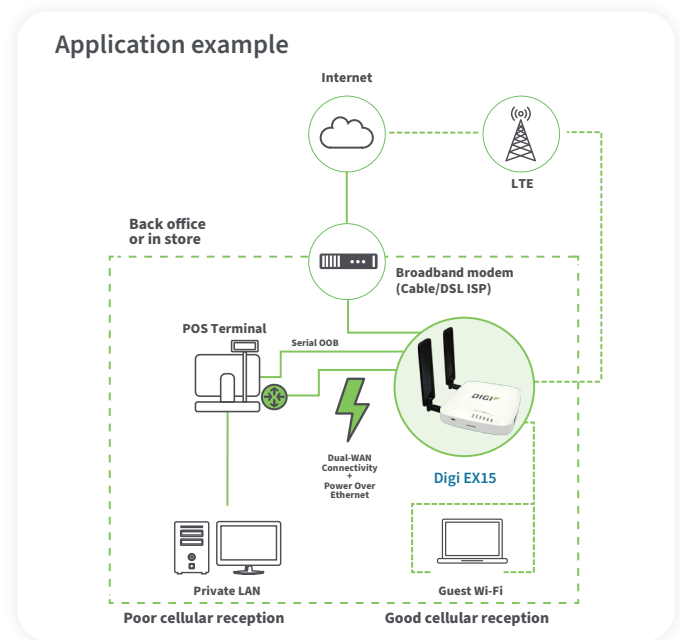
Digi RM provides centralized control, management, security, edge intelligence and day-to-day network management for hundreds and thousands of distributed devices.

For fast and easy installations, a site survey battery, PoE injector and mounting accessories are included for proper placement based on optimal signal strength.

Key features, benefits and applications

- LTE-certified **Digi CORE plug-in modem**
- Advanced routing capabilities to help you match your use case
- Scalable cellular technology allows you to match speeds to applications and future proof your network
- Optimized connectivity to any Ethernet device
- Multiple mounting options and accessories
- Serial port for remote, out-of-band management
- Zero-touch provisioning and cloud management
- Meets the U.S. government **FIPS 140-2** cybersecurity standard
- Value-added services include **Digi Containers** to enable powerful, cost-efficient applications and **Digi WAN Bonding** for 5G/LTE WAN aggregation with immediate failover

Related Digi enterprise router solutions



DIGI EX15 Specifications



Manage and configure Digi EX15
with Digi Remote Manager

SPECIFICATIONS	DIGI EX15 WITH DIGI
CELLULAR CONNECTIVITY**	
DIGI CORE PLUG-IN LTE MODEMS	LTE Cat 4 (Global): B1, B2, B3, B4, B5, B7, B8, B12, B13, B18, B19, B20, B25, B26, B28, B39, B40, B41; 3G: B1, B2, B4, B5, B6, B8, B19; 2G EDGE / GPRS: 850 / 900 / 1800 / 1900 MHz; Transfer rate (max): 150 Mbps, 50 Mbps up LTE-A Cat 7 (US): B2, B4, B5, B7, B12, B13, B25, B26, B41, B42, B43, B48, B66, B71; WCDMA: B2, B5; Transfer rate (max): 300 Mbps, 150 Mbps up
CONNECTORS	(2) 50 Ω SMA (center pin: female)
SIM SLOTS	(2) Mini-SIM (2FF); software selectable, hardware switchable
SOFTWARE AND MANAGEMENT*	
REMOTE MANAGEMENT	Digi Remote Manager ; SNMP v3 (user installed/managed), encrypted SMS
LOCAL MANAGEMENT	WebUI (HTTPS/HTTPS); CLI (SSH, serial port)
PROTOCOLS	RIP, RIPng, OSPFv2, OSPFv3, BGP, Babel, IS-IS
MANAGEMENT / TROUBLESHOOTING TOOLS	FTP client, SCP; protocol analyzer with PCAP for Wireshark; event logging with syslog and SMTP client; NTP/SNTP
MEMORY	256 MB RAM, 512 MB flash
ETHERNET	
PORTS	(2) RJ-45; 10/100/1000/2500 Mbps (auto-sensing)
WI-FI (OPTIONAL)	
CONNECTIVITY	2 x 2 MIMO 2.4/5 GHz: 802.11 b/g/n 2.4 GHz; 802.11 n/a/ac 5 GHz
SERIAL	
PORTS	(1) RS-232 (RJ-45)
PHYSICAL	
DIMENSIONS	142 mm x 128 mm x 31 mm (5.6 in x 5.0 in x 1.2 in)
WEIGHT	0.2 kg (7.0 oz)
STATUS LEDs	LAN (link = solid, flashing = act), WAN (link = solid, flashing = act), LTE, 5 signal, SIM 1 and 2 LEDs
ENCLOSURE	Plastic
POWER REQUIREMENTS	
POWER INPUT	18 VDC, 1 A, reverse polarity protection
INCLUDED ACCESSORIES	Includes PSU, antennas, and remote mounting kit: passive PoE injector, mounting bracket and accessories
ENVIRONMENTAL	
OPERATING TEMPERATURE	0 °C to 40 °C (32 °F to 104 °F)
RELATIVE HUMIDITY	5% to 95% (non-condensing)
APPROVALS**	
CELLULAR	PTCRB; US: AT&T, T-Mobile, Verizon; Canada; Europe visit digi.com/resources/certifications for latest certifications and updates
EMISSIONS / IMMUNITY	Part 15, Subpart B, Class A; CE, RCM; CAN ICES-3(B)/NMB-3(B) WARRANTY
PRODUCT WARRANTY	1-year

DIGI EX15

Product Photos

Digi EX15 Photos

Digi EX15 — Cat 4



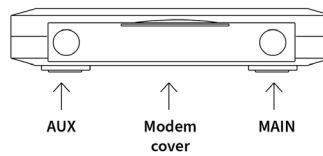
Digi EX15 — Cat 7



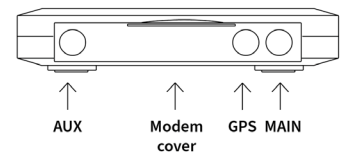
Digi EX15 — Cat 4 left



Digi EX15 — Cat 4 left



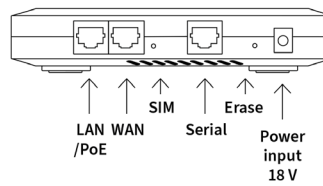
Digi EX15 — Cat 7 left



Digi EX15 — Cat 4 right



Digi EX15 — right



Featured Technologies



*FirstNet® and the FirstNet logo are registered trademarks and service marks of the First Responder Network Authority. All other trademarks are the property of their respective owners.